



TwinSpace

TwinSpace

TRAIN, TOUR, AND EXPLORE YOUR
FACILITIES FROM ANYWHERE





TwinSpace: Unlock New Dimensions in Facilities Management

With TwinSpace, Bidvest Noonan transforms facilities management by bringing every corner of your facility to life. Our advanced digital twin technology creates detailed 3D virtual replicas of your space, providing a dynamic and interactive way to manage operations. Whether conducting virtual tours for onboarding, integrating training modules into digital layouts, or planning efficient cleaning routes, TwinSpace can deliver better results for you.

With TwinSpace you can generate precise 2D and 3D floor plans. Facilities managers can use these accurate layouts to coordinate safety drills, perform remote

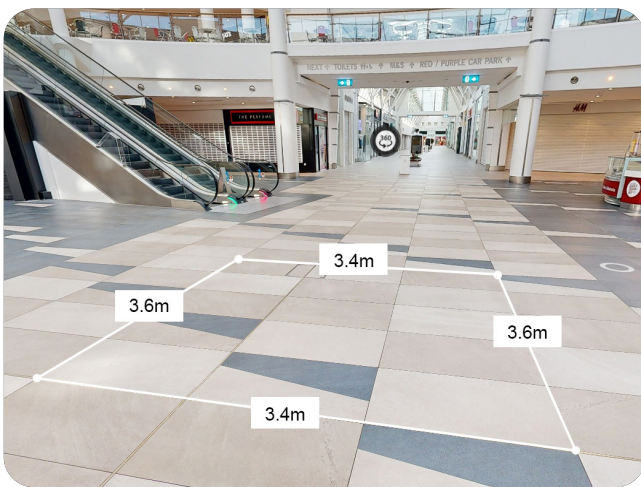
inspections, perform building condition analysis, and implement emergency procedures, all without stepping foot on-site. For cleaning and maintenance teams, these maps ensure that every task is executed with precision, optimising time and resources while upholding the highest standards.

Our digital twin solution provides an immersive experience. Navigate spaces remotely, make informed decisions with ease, and manage everything from individual rooms to entire campuses. With comprehensive spatial information at our fingertips, our teams stay aligned and well-prepared.

Accurate Floor Plans and 3D Models

TwinSpace captures precise spatial data to create detailed and highly accurate floor plans. These schematic floor plans include Gross Internal Area (GIA) measurements, which define the floor area contained within the building, measured to the internal face of the external walls. This enables more effective measurement and planning of work schedules and space management, optimising resource allocation and ensuring consistent service quality.

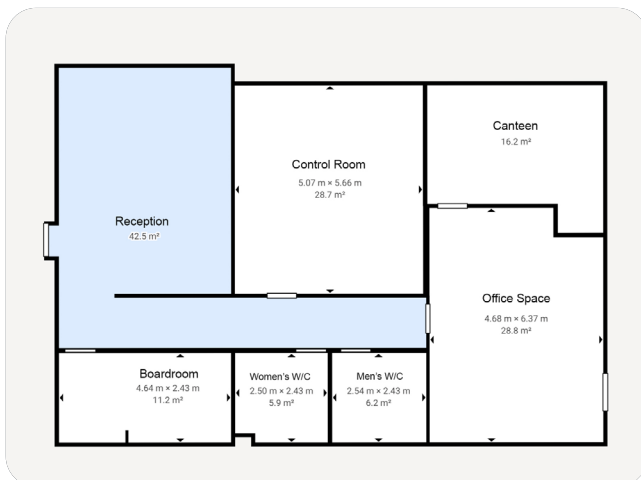
TwinSpace's 3D models offer an intuitive and user-friendly experience for exploring facilities. Whether you're visualising a room layout or navigating an entire building, this interactive tool simplifies space analysis and decision-making, providing a realistic view without the need for on-site visits.



Accurate measurements captured within a 360° virtual 3D space for faster planning and decision making.



Advanced scanning technology captures every detail, bringing your facility to life in stunning 4K in a matter of hours.



Generate accurate 2D layouts for better space planning and seamless project coordination.



Explore 3D replicas for a comprehensive view of your facility.

Transforming Safety and Training with TwinSpace

Bidvest Noonan's TwinSpace technology offers a safer way to train employees by allowing them to explore 3D models of their work environment remotely. This immersive training helps staff familiarise themselves with safety protocols and evacuation routes, reducing the need for on-site sessions and minimising disruption to daily operations.

Virtual Inspections and Proactive Safety Management

Facility managers can conduct virtual safety inspections to identify potential risks and ensure compliance. By providing a clear view of evacuation routes and safety features, TwinSpace supports proactive management, enabling swift updates and continuous improvement of safety measures.

Interactive Conditions & Layouts:

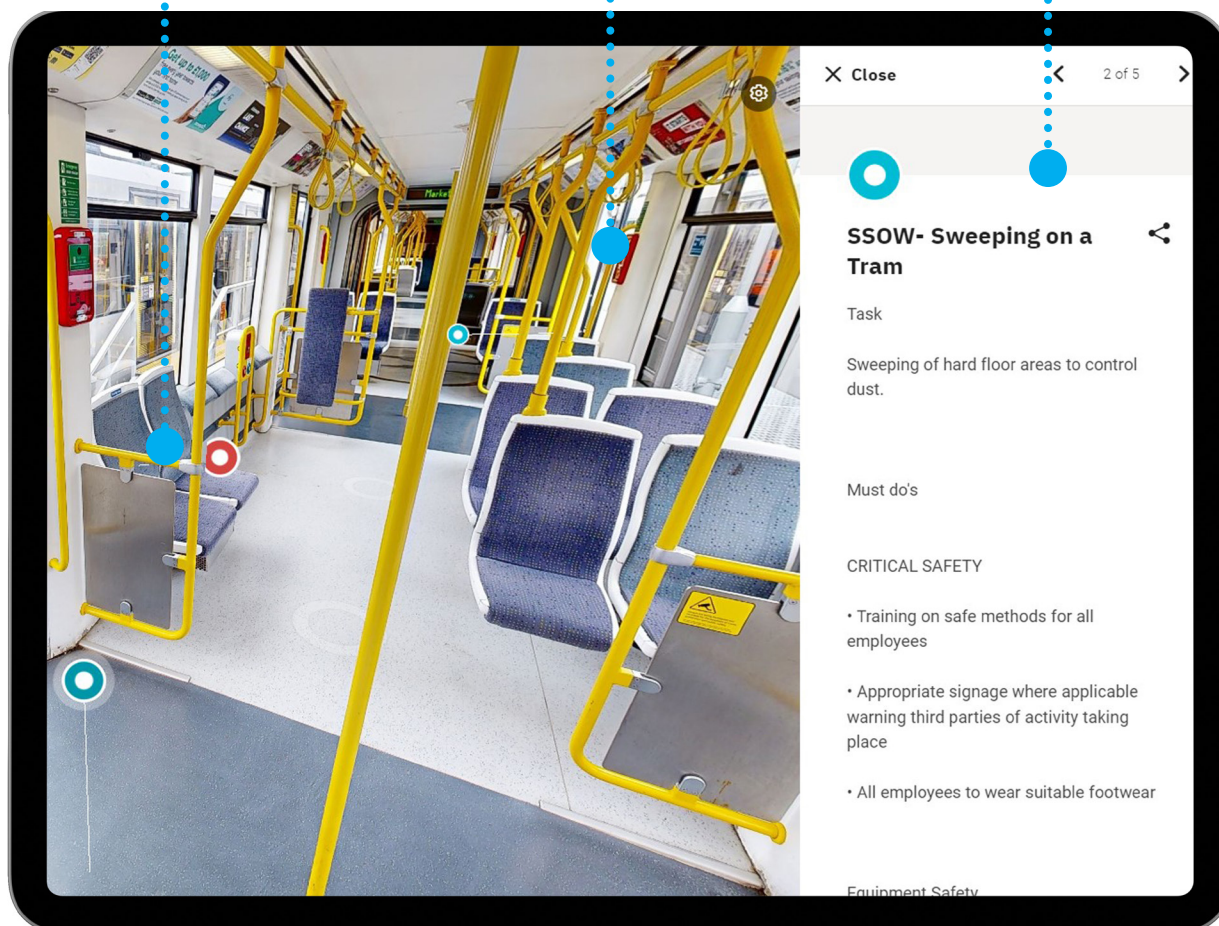
Facilitate accurate project handovers and training sessions and layouts for accurate project handovers

High Quality 2D & 3D Models:

Reduce the need for physical site visits, allowing remote measurement and management.

Detailed Instruction Features:

Support training with multimedia formats, ensuring comprehensive understanding and retention.



TwinSpace Has the Answers

What's the best route for
emergency evacuation
from this floor?

How do I open these
windows?

Scan your NFC tag here
during your security patrol

When should I feed and
water this plant?

What is the correct
procedure for cleaning
this floor?



Seamless Collaboration and Data-Driven Insights with TwinSpace

Bidvest Noonan's TwinSpace technology transforms how teams, stakeholders, and service providers communicate and collaborate by providing an interactive 3D view of facilities. With real-time remote access from any device, facilities managers can instantly pull up the spaces they need to examine, eliminating the need for time-consuming commutes and costly on-site visits. This capability allows for faster, more informed, and data-driven decisions, enabling managers to stay focused on critical tasks and optimise resource allocation.

Engage Stakeholders Effectively

Executives, tenants, and service providers can explore precise project models and 3D environments, allowing for highly detailed and informed discussions. This transparency creates stronger partnerships, ensures a shared understanding of project scope, and accelerates planning.

Precise, Real-Time Collaboration

Teams can collaborate seamlessly within the digital twin model, ensuring that every conversation is grounded in the same detailed, up-to-date information. This level of precision in communication reduces miscommunication and keeps everyone aligned with the project's goals, driving more efficient outcomes and saving time.

TwinSpace Benefits & Features



Improved Training

3D models allow for remote training and safety inspections. New hires can explore their environment and learn protocols, reducing human error by 30% and improving safety compliance.



Speed & Efficiency

The scan capture process is quick, allowing a typical building space to be scanned, edited, and rendered into a finished model within hours. This rapid turnaround helps meet timelines and minimises disruption.



Highly Accurate Floor Plans

Precise 2D and 3D measurements provide facilities teams, such as cleaning teams, with clear layouts for efficient planning and seamless project coordination



Robust Data Security

Hosted on Amazon's AWS ecosystem, TwinSpace adheres to industry best practices in data security and privacy. This ensures that sensitive information is protected, providing peace of mind.



Efficient Maintenance

Digital twins map service requests to exact locations, enabling faster & more accurate repairs, minimising downtime and costs.



Adaptable Space Management

Plan and modify layouts effectively to meet changing needs without impacting ongoing operations.



Remote Accessibility

Provide stakeholders with virtual site tours and remote access to facilities for enhanced engagement and oversight.



Sustainable Operations

Optimise resource use and reduce environmental impact with better facility management practices.

Improving Operations at a Prestigious Corporate Site in London

A leading property management company, managing a multi-story city centre building, expanding to over 500,000 sq. ft. uses Bidvest Noonan's TwinSpace technology to achieve a wide range of benefits. Facilities teams at the property use the 3D virtual models to enhance training. The model is used to train team members on cleaning and patrol routes, safety protocols, and more. New team members complete training in the model remotely, ensuring they arrive at the site well-prepared.

Seeing the advantages of training with TwinSpace, our client has begun to use the platform to onboard their new staff, offering an immersive experience that familiarised them with the building's layout and operational requirements from day one.

The digital model serves as a valuable asset for ensuring the safety of all building users, tenants, and employees. Comprehensive safety data, including emergency evacuation routes and equipment locations, is readily accessible through the model. Additionally, the company uses TwinSpace to showcase the property to potential tenants, plan office space allocation, and manage retrofitting projects with minimal disruption.

Embedded information in our models, including PDFs and videos, provides detailed instructions and insights to inform tenants, maintenance teams and managers.





Enhancing Shopper Experience at a Premier Shopping Destination

One of Ireland's largest shopping centres is enhancing the shopping experience with Bidvest Noonan's TwinSpace technology. By scanning over 800,000 sq. ft. of retail space, we created a dynamic 3D model that brings the centre's 100 units and multi-screen cinema to life.

This digital transformation helps shoppers navigate the busy centre with ease. Interactive maps can guide visitors directly to their favourite stores and dining spots, saving time and improving overall experience.

TwinSpace is also being used to train staff, allowing them to explore the centre virtually and understand the layout before starting on-site. This ensures new team members are familiar with key locations and safety procedures, enabling them to work efficiently and assist shoppers confidently from day one.

Behind the scenes, TwinSpace is improving how the centre management team plans and manages the space. Detailed layouts and exact measurements support strategic decisions on store locations and foot traffic flow, while clearly marked safety routes and emergency exits ensure a safer shopping environment for all.

To enquire about TwinSpace, please contact:
Peter.Smyth@bidvestnoonan.com

bidvestnoonan.com